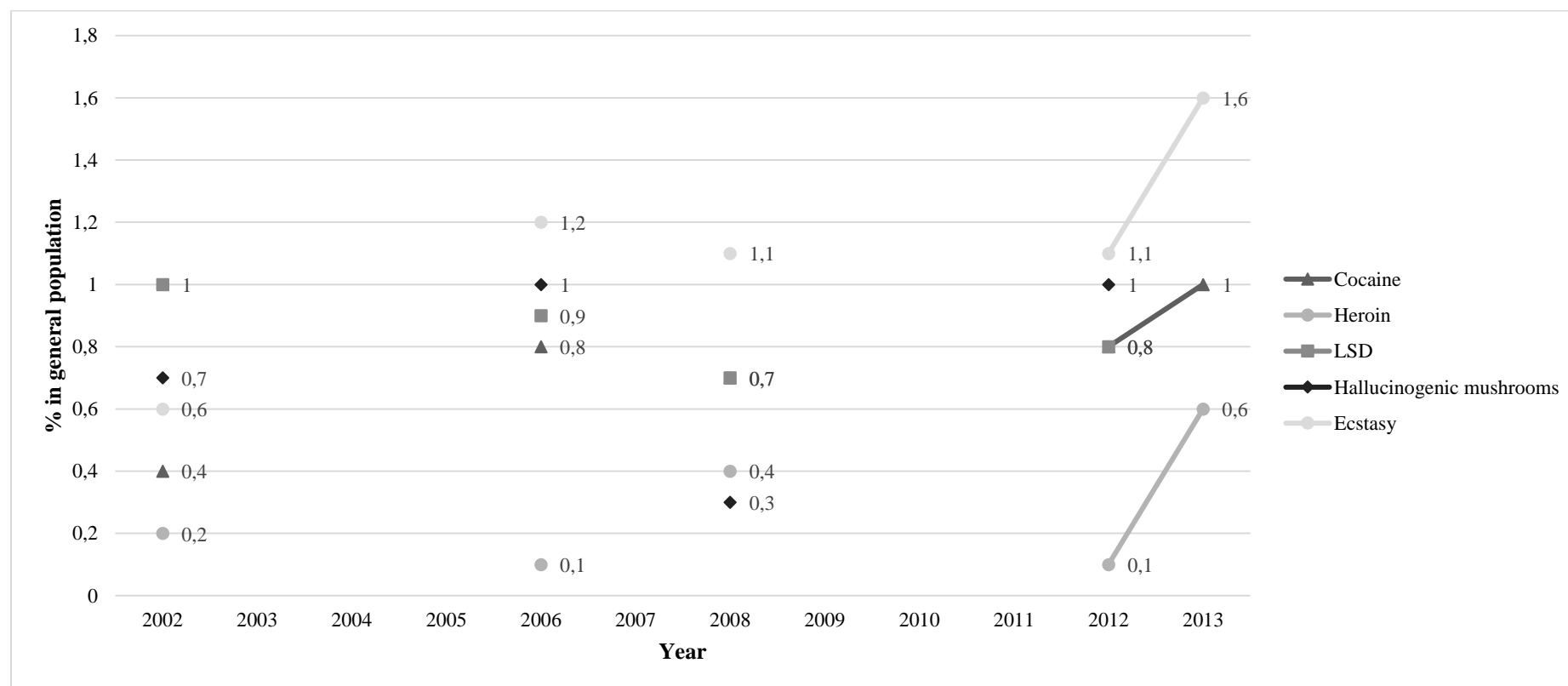


### Supplementary Material

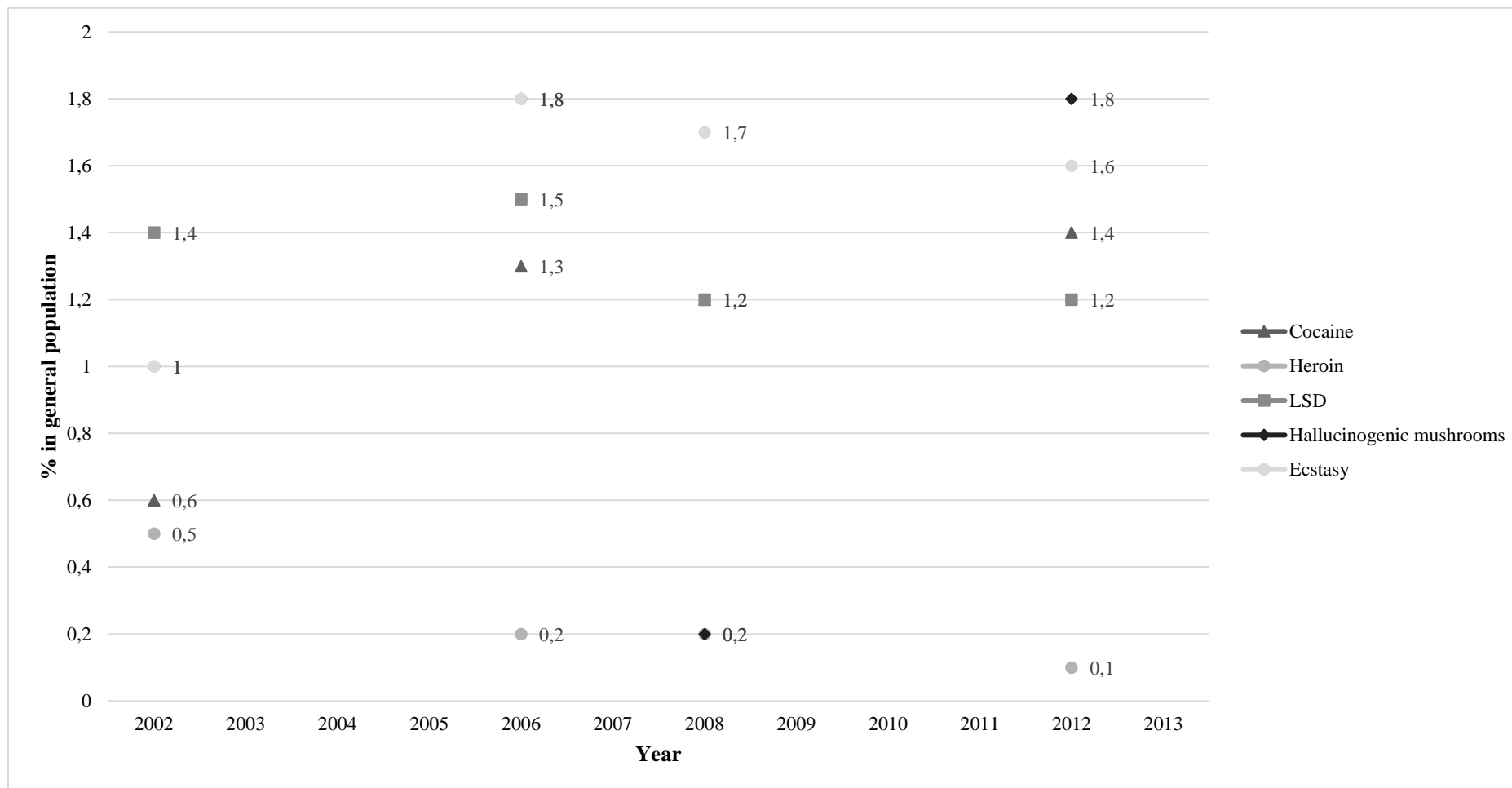
#### Usage of illicit substances other than cannabis and amphetamine

Figure S1 depicts usage of other drugs in the lifetimes of the general population – cocaine, heroin, LSD, hallucinogenic mushrooms and ecstasy.



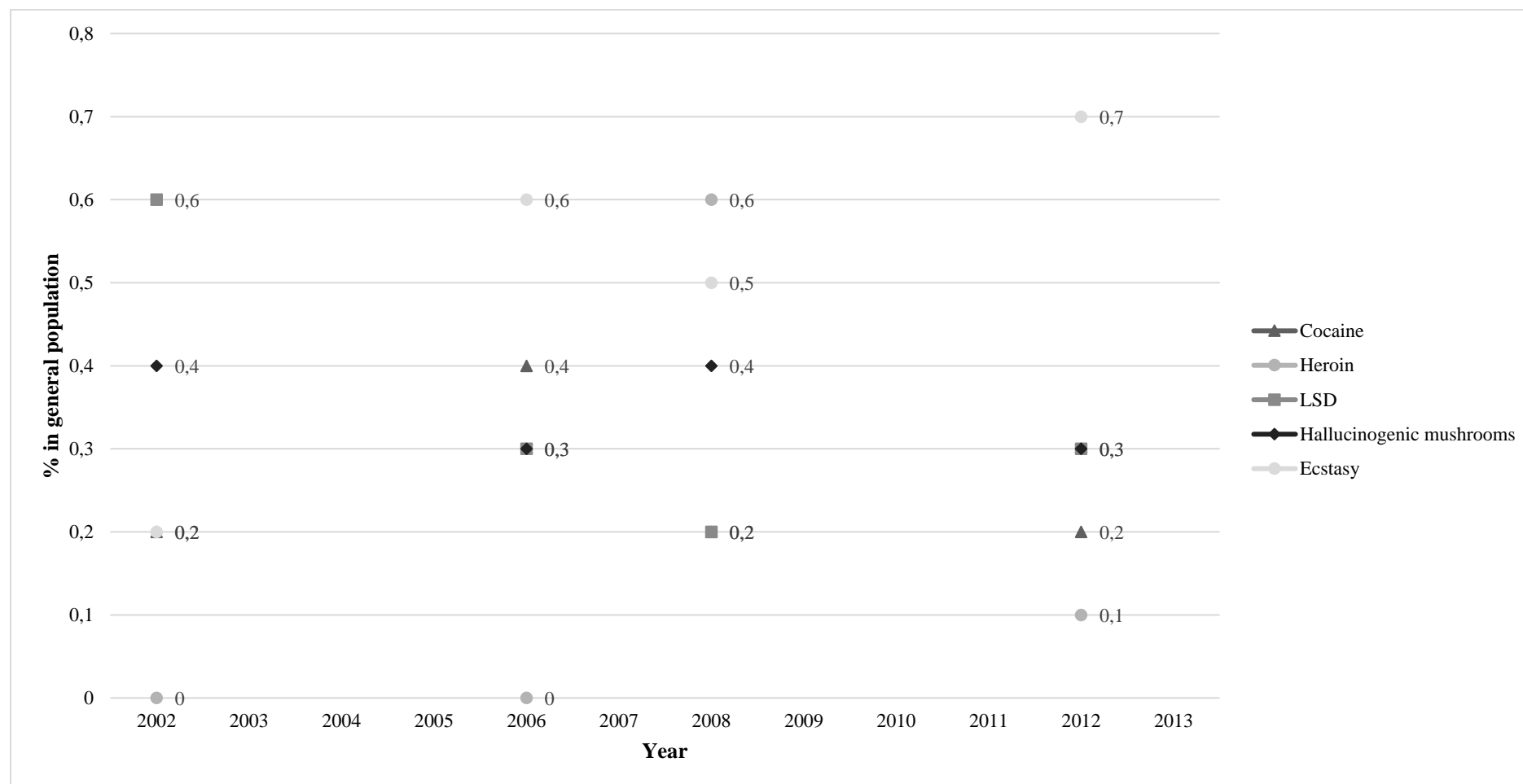
**Figure S1:** The lifetime usage of various illicit substances during among the Polish population. *Note.* Figure based on data from: Sierosławski, 2002; Policha & Sierosławski, 2007; Strzelecka, 2009; Malczewski & Misiurek, 2013; Malczewski & Misiurek, 2014.

Figure S2 depicts usage of other drugs during lifetime– cocaine, heroin, LSD, hallucinogenic mushrooms and ecstasy by males.



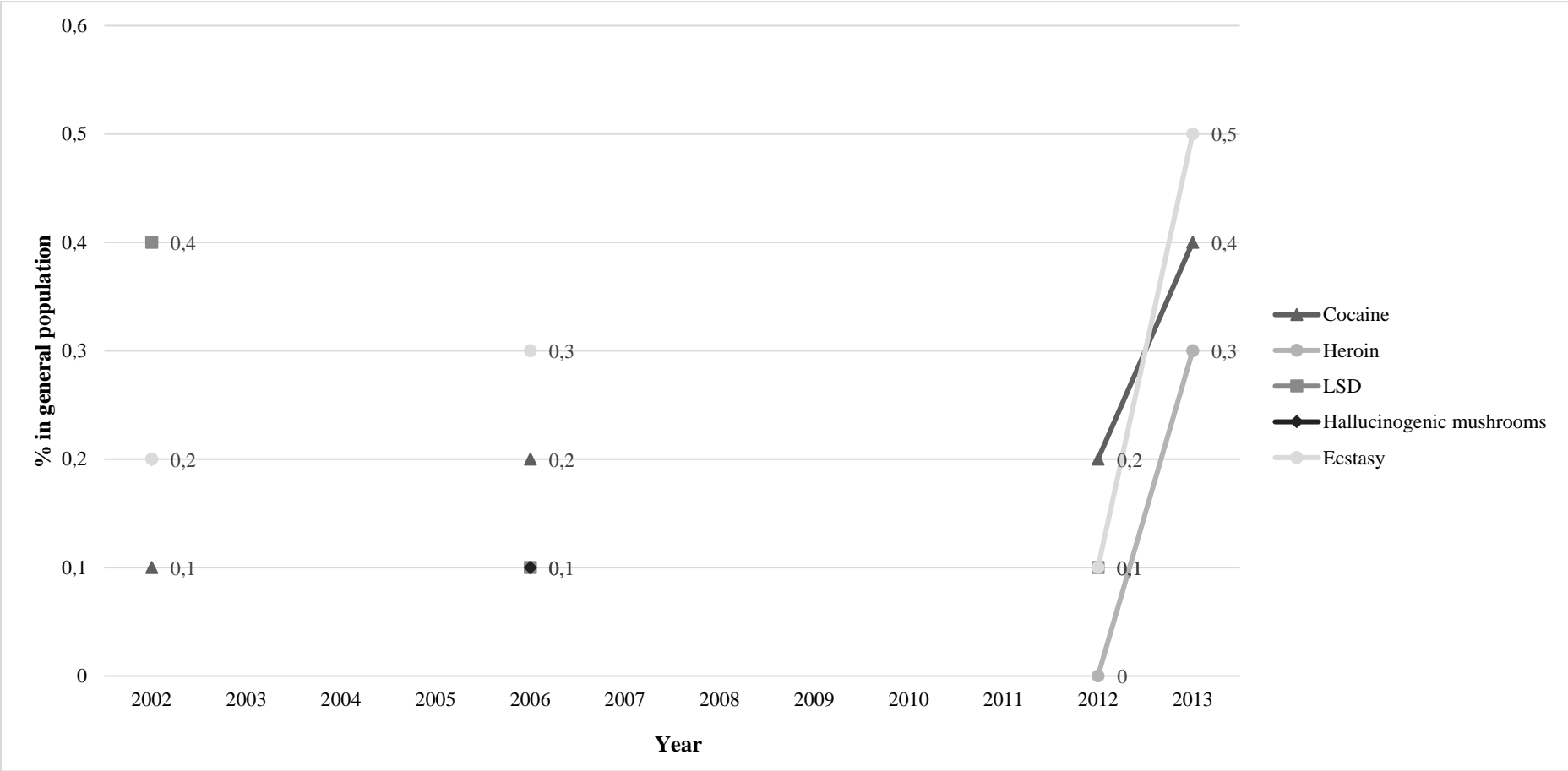
**Figure S2:** The lifetime usage of various illicit substances among males in Poland. *Note.* Figure based on data from: Sierosławski, 2002; Policha & Sierosławski, 2007; Strzelecka, 2009; Malczewski & Misiurek, 2013.

Figure S3 depicts usage of other drugs during lifetime – cocaine, heroin, LSD, hallucinogenic mushrooms and ecstasy by females.



**Figure S3:** The lifetime usage of various illicit substances during among females in Poland. *Note.* Figure based on data from: Sierosławski, 2002; Policha & Sierosławski, 2007; Strzelecka, 2009; Malczewski & Misiurek, 2013.

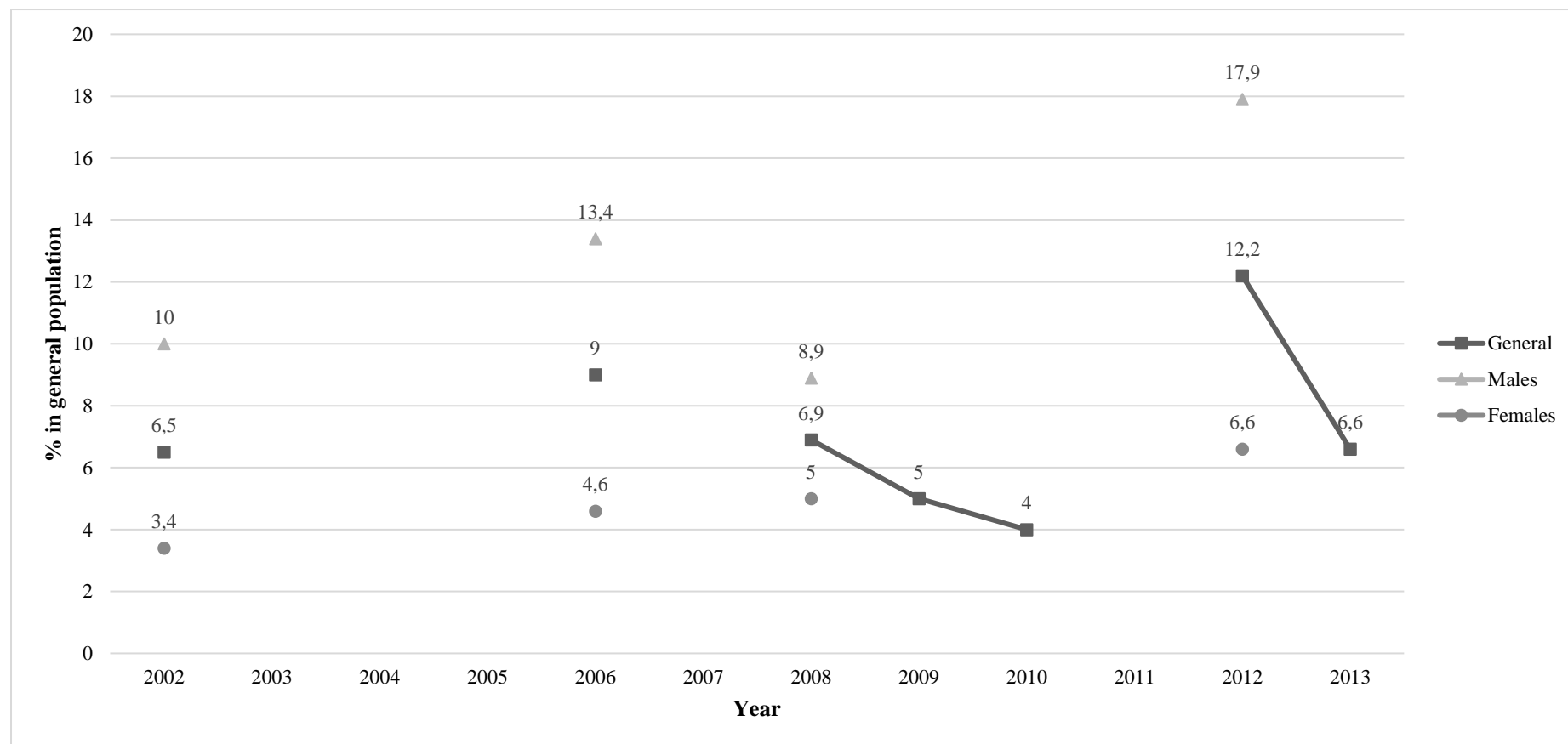
Figure S4 depicts the usage of other drugs during 12 months before the study in the general population – cocaine, heroine, LSD, hallucinogenic mushrooms and ecstasy.



**Figure S4:** Usage of various illicit substances during the last 12 months before the study among the Polish population. *Note.* Figure based on data from: Sierosławski, 2002; Policha & Sierosławski, 2007; Malczewski & Misiurek, 2013; Malczewski & Misiurek, 2014.

### Usage of cannabis at least once in a lifetime

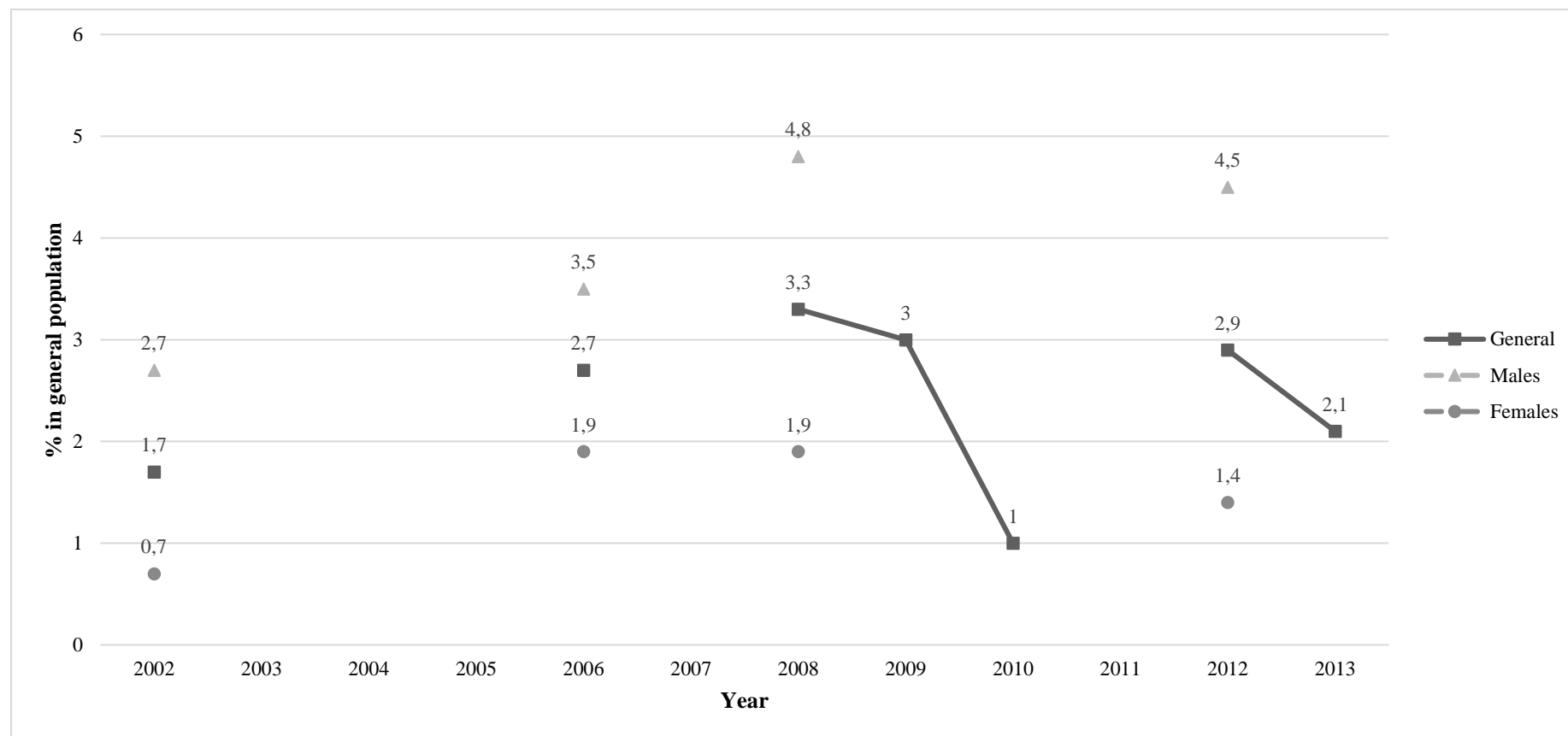
Figure S5 depicts usage of cannabis at least once during lifetime in general Polish population.



**Figure S5:** Lifetime usage of cannabis in the Polish population. *Note.* Figure based on data from: Sierosławski, 2002; Policha & Sierosławski, 2007; Strzelecka, 2009; Malczewski & Kidawa, 2010; Malczewski, Struzik, Strzelecka & Misiurek, 2012; Malczewski & Misiurek, 2013; Malczewski & Misiurek, 2014.

### Usage of amphetamine at least once in a lifetime

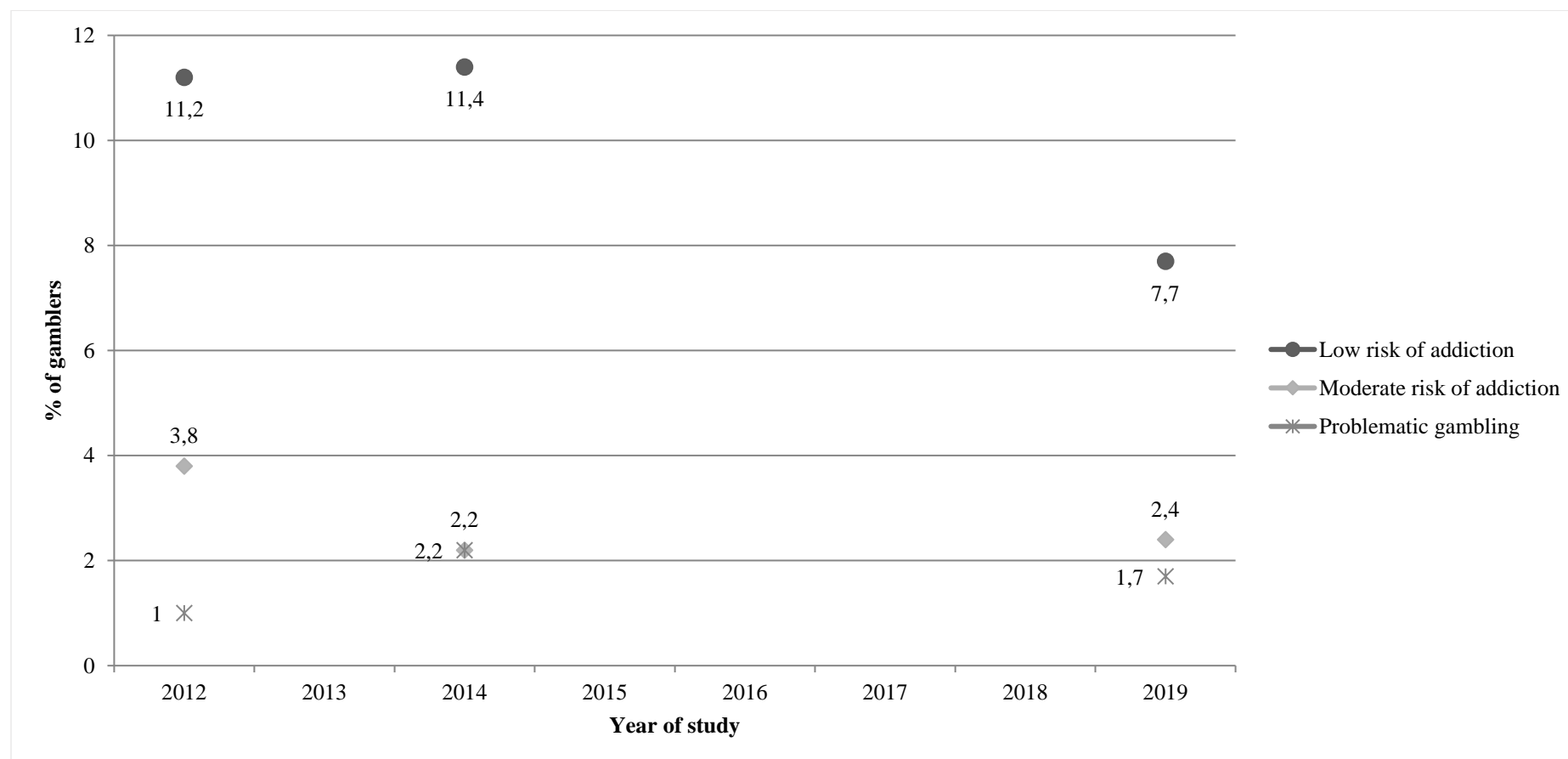
Figure S6 depicts usage of amphetamine at least once during lifetime in general Polish population.



**Figure S6:** Lifetime usage of amphetamines in the Polish population. *Note.* Figure based on data from: Sierosławski, 2002; Policha & Sierosławski, 2007; Strzelecka, 2009; Malczewski & Kidawa, 2010; Malczewski, Struzik, Strzelecka & Misiurek, 2012; Malczewski & Misiurek, 2013; Malczewski & Misiurek, 2014.

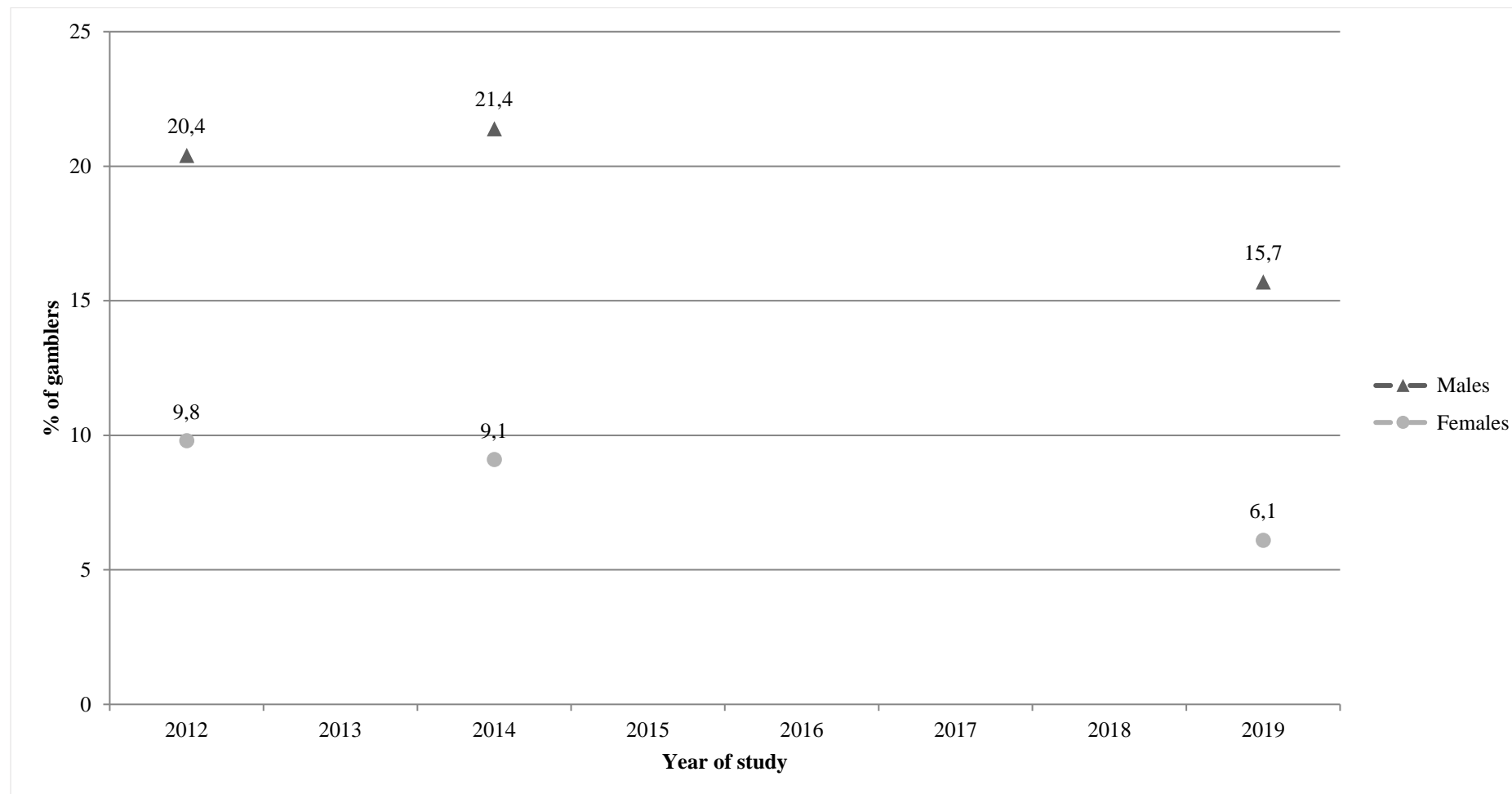
### Problematic gambling

Figure S7 depicts percentages of people who gamble and who were identified to be at minor and moderate risk of developing gambling addiction and problematic gambling according to results in the Canadian Problem Gambling Index (Ferris & Wynne, 2001).



**Figure S7:** Risk of gambling addiction among gamblers in Poland. *Note.* Figure on the basis of data from Badora et al., 2015 & Moskalewicz et al., 2019.

Figure S8 depicts gender differences in problematic gambling symptoms according to results in the Canadian Problem Gambling Index (Ferris & Wynne, 2001).



**Figure S8:** Gender differences in problematic gambling symptoms in the Polish population. *Note.* Figure based on data from Badora et al., 2015 & Moskalewicz et al., 2019.